

## LKDB-PUA series

**Twin synthetic castors,  
colour black, wheels with  
thermoplastic polyurethane tread**

50–110 kg

-20 °C to +70 °C



**Bracket:** LKDB series

- high-quality nylon 6, impact resistant
- high-quality synthetic plain bore in the swivel head
- zinc-plated steel threaded pin
- colour black RAL 9005

**Wheel:** PUA series

- tread: high-quality thermoplastic polyurethane (TPU), hardness 92 Shore A, colour black, non-marking, non-staining
- wheel centre: high-quality nylon 6, impact resistant, colour black RAL 9005

**Other features:**

- operating temperature: temporarily up to +80 °C
- the load capacity reduces at ambient temperatures above +30 °C

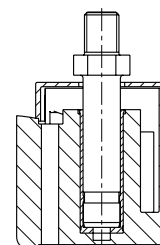
**Additional details:**

- bracket series: page 89
- brakes: page 112–113
- bearing types: page 84–85



**BLICKLE  
DESIGN LINE**

2



Swivel castors	Swivel castors with "Radstop" brake	Wheel Ø [mm]	Wheel width [mm]	Total castor width [mm]	Load capacity [kg]	Bearing type	Total height incl. hexagon [mm]	Threaded pin [mm]	Offset swivel castor [mm]
LKDB-PUA 50G	LKDB-PUA 50G-RA	50	2 x 12	51	50	plain bore	61	M8 x 15	20
LKDB-PUA 75G	LKDB-PUA 75G-RA	75	2 x 15	55	75	plain bore	83	M10 x 15	24
LKDB-PUA 100G	LKDB-PUA 100G-RA	100	2 x 19	63	110	plain bore	121	M12 x 20	33

Castors are not approved for office chairs.

### Versions / options



image LKDB-PUA 50G-RA	electrically conductive version, colour black, non-marking, hardness 98 Shore A	with plug-in pin Ø 11 x 19.5	with zinc-plated steel top plate fitting 38x38 mm 25x25/27x27 mm	with zinc-plated steel top plate fitting 60x60 mm 38x38/46x46 mm	corrosion-resistant version	in special colour
Technical description page	50	105	106	106		
Product code suffix	-ELS	-ES	-P20	-P23		
Available for	all	wheel Ø 50–75 mm*	wheel Ø 50–75 mm**	wheel Ø 75–100 mm***	upon request	upon request

\* Total height -3 mm

\*\* Total height +5 mm

\*\*\* Total height wheel Ø 75 +5 mm, wheel Ø 100 +2 mm