

LPFE-ALEV, BPFE-ALEV series

Heavy-duty castors with polyurethane torsion springs, wheel with "Blickle EasyRoll" elastic solid rubber tyre

200–400 kg

Bracket: LPFE/BPFE series

- solid welded steel construction, solid forged part, zinc-plated, yellow-passivated, Cr6-free
- patented woodruff key design for outstanding spring-damping properties

Swivel bracket:

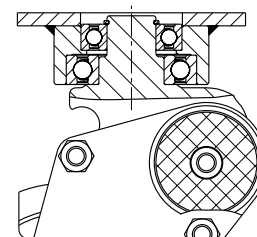
- one sealed lifetime lubricated grooved ball bearing in the swivel head (two for wheel Ø 125x50 mm or more)

Wheel: ALEV series

- tyre: high-quality elastic solid rubber "Blickle EasyRoll" in smooth rolling quality, hardness 65 Shore A, colour black
- wheel centre: die-cast aluminium

Additional details:

- bracket series: page 95
- wheel series: page 63
- bearing types: page 84–85



Swivel castors	Fixed castors	Wheel Ø [mm]	Wheel width [mm]	Load capacity [kg]	Spring force [kg]	Pretensioning force [kg]	Spring travel [mm]	Total height [mm]	Plate size [mm]	Bolt hole spacing [mm]	Bolt hole Ø [mm]	Offset swivel castor [mm]
LPFE-ALEV 100K-FA	BPFE-ALEV 100K-FA	100	40	200	330	40	16	170	100 x 85	80 x 60	9	38
LPFE-ALEV 125K-FA	BPFE-ALEV 125K-FA	125	40	250	290	40	18	192	100 x 85	80 x 60	9	45
LPFE-ALEV 127K	BPFE-ALEV 127K	125	50	300	370	40	25	225	140 x 110	105 x 75–80	11	61
LPFE-ALEV 150K	BPFE-ALEV 150K	150	50	400	370	40	25	255	140 x 110	105 x 75–80	11	61

Versions / options



	with non-marking grey tyre	electrically conductive version, black tyre	with stem
Technical description page	52	50	104
Product code suffix	-SG	-EL	-ZA
Available for	all	upon request	upon request