

LHF-ALEV, BHF-ALEV series

Pressed steel castors, heavy-duty design, with steel spring, wheel with "Blickle EasyRoll" elastic solid rubber tyre



200–500 kg

Bracket: LHF/BHF series

- strong pressed steel, zinc-plated, blue-passivated, Cr6-free
- heavy fork and top plate
- robust spring structure with steel spring
- maintenance-free spring mechanism

Swivel bracket:

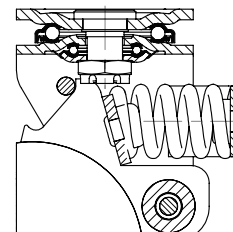
- double ball bearing in the swivel head
- bolted and secured central kingpin, extremely strong
- particularly resistant to shocks and impact due to **four specially-shaped, hardened bearing seats**

Wheel: ALEV series

- tyre: high-quality elastic solid rubber "Blickle EasyRoll" in smooth rolling quality, hardness 65 Shore A, colour black
- wheel centre: die-cast aluminium

Additional details:

- bracket series: page 94
- wheel series: page 63
- bearing types: page 84–85



Swivel castors	Fixed castors	Wheel Ø [mm]	Wheel width [mm]	Load capacity [kg]	Spring force [kg]	Pretensioning force [kg]	Spring travel [mm]	Total height [mm]	Plate size [mm]	Bolt hole spacing [mm]	Bolt hole Ø [mm]	Offset swivel castor [mm]
LHF-ALEV 100K-1	BHF-ALEV 100K-1	100	40	200	200	30	19	175	100 x 85	80 x 60	9	32
LHF-ALEV 100K-3	BHF-ALEV 100K-3	100	40	200	200	30	19	175	140 x 110	105 x 75–80	11	32
LHF-ALEV 125K-1	BHF-ALEV 125K-1	125	40	250	240	30	21	200	100 x 85	80 x 60	9	45
LHF-ALEV 125K-3	BHF-ALEV 125K-3	125	40	250	240	30	21	200	140 x 110	105 x 75–80	11	45
LHF-ALEV 160K	BHF-ALEV 160K	160	50	400	400	50	25	245	140 x 110	105 x 75–80	11	65
LHF-ALEV 200K	BHF-ALEV 200K	200	50	500	400	50	25	265	140 x 110	105 x 75–80	11	65

11

Versions / options



	with non-marking grey tyre	electrically conductive version, black tyre	with "Radstop" wheel brake
Technical description page	52	50	113
Product code suffix	-SG	-EL	-RA
Available for	all	upon request	upon request