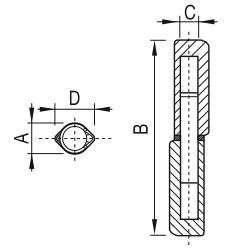



Pernio perfil gota. Eje y arandela de latón

Paumelles profil goutte. Pivot et rondelle en laiton

Perno perfil gota. Eixo de latão

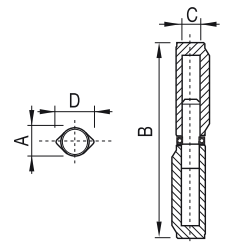



Código code/código	øA (mm)	B (mm)	øC (mm)	D (mm)	
86-140	10	60	6	12	24
86-144	12	80	7	14	10
86-148	14	100	8	16	10
86-152	16	120	9	18	10
86-157	18	140	10	21	20
86-158	20	140	12	24	18
86-159	22	150	14	26	16

Pernio perfil gota con rodamiento

Paumelles profil goutte avec roulement

Perno perfil gota com rolamento

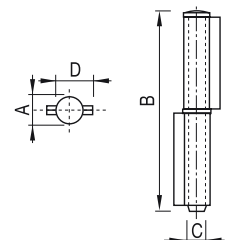



Código code/código	øA (mm)	B (mm)	øC (mm)	D (mm)	
86-171	20	140	11	25	10
86-171/4	20	160	11	25	10
86-171/8	20	180	11	25	10

Pernio 2 alas. Acero

Paumelles deux ailes. Acier


Perno 2 abas. Aço

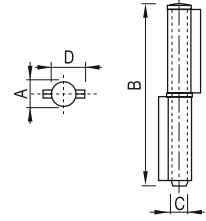



Código code/código	øA (mm)	B (mm)	øC (mm)	D (mm)	
86-180	12,0	80	7,7	16,5	20
86-184	13,0	100	8,7	17,5	20
86-188	15,3	120	9,8	21,0	30
86-192	16,0	140	10,7	21,5	10
86-196*	17,6	170	11,7	25,0	5
86-198*	17,6	200	11,7	25,0	5

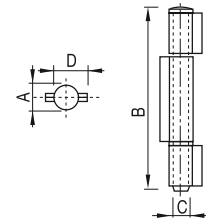
* Con arandela / Avec rondelle / Com arruela


Pernio 2 alas. INOX*Paumelles deux ailes. INOX**Perno 2 abas. INOX***INOX AISI 304**

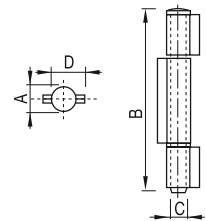
Código code/código	øA (mm)	B (mm)	øC (mm)	D (mm)	
86-199/02	12,0	80	8	16,0	24
86-199/04	13,0	100	9	18,0	24
86-199/06	14,5	120	10	19,5	24
86-199/08	16,0	140	11	21,0	24

**Pernio 3 alas. Acero***Paumelles trois ailes. Acier**Perno 3 abas. Aço*

Código code/código	øA (mm)	B (mm)	øC (mm)	D (mm)	
86-200	12,0	80	8	16,0	24
86-204	13,0	100	9	18,0	24
86-208	14,5	120	10	19,5	24
86-212	16,0	140	11	21,0	24
86-216	17,5	170	12	24,0	12
86-220	20,0	200	14	27,0	12

**Pernio 3 alas. INOX***Paumelles trois ailes. INOX**Perno 3 abas. INOX***INOX AISI 304**

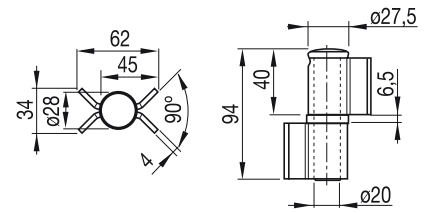
Código code/código	øA (mm)	B (mm)	øC (mm)	D (mm)	
86-221/03	12,0	80	8	16,0	24
86-221/05	13,0	100	9	18,0	24
86-221/07	14,5	120	10	19,5	24
86-221/09	16,0	140	11	21,0	24




Pernio reforzado 2 alas. Acero

Paumelle renforcée deux ailes. Acier

Perno reforçado 2 abas. Aço

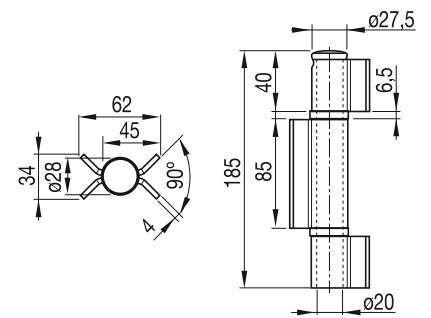


Código code/código	Modelo	
86-221/2	Arandela latón/rondelle laiton/aruela de latão	8
86-221/4	Cojinete/roulement/rolamento	8

Pernio reforzado 3 alas. Acero

Paumelle renforcée trois ailes. Acier

Perno reforçado 3 abas. Aço

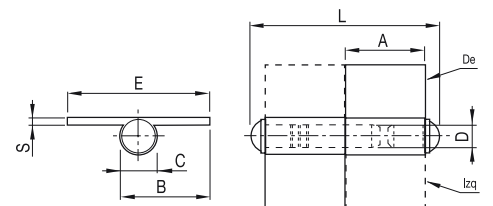



Código code/código	Modelo	
86-221/6	Arandela latón/rondelle laiton/aruela de latão	4
86-221/8	Cojinete/roulement/rolamento	4

Pernio ala media. Acero

Paumelles aile moyenne. Acier

Perno aba média. Aço



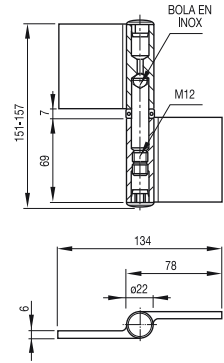
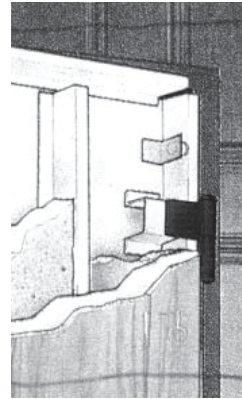
Código code/código		A (mm)	B (mm)	øC (mm)	øD (mm)	E (mm)	L (mm)	S (mm)	
86-222/04	D	30	35	14,0	8	56	72	2,7	20
86-222/05	I	30	35	14,0	8	56	72	2,7	20
86-222/06	D	39	35	14,0	8	56	90	2,7	20
86-222/07	I	39	35	14,0	8	56	90	2,7	20
86-222/08	D	50	48	16,5	10	80	113	3,0	20
86-222/09	I	50	48	16,5	10	80	113	3,0	20
86-222/10	D	60	48	16,5	10	80	133	3,0	20
86-222/11	I	60	48	16,5	10	80	133	3,0	20
86-222/12	D	70	55	19,5	12	90	155	3,5	20
86-222/13	I	70	55	19,5	12	90	155	3,5	20
86-222/14	D	80	55	19,5	12	90	175	3,5	20
86-222/15	I	80	55	19,5	12	90	175	3,5	20

D: Derecha/droite/dereita I: Izquierda/gauche/esquerda

Pernio regulable. Acero

Paumelle réglable. Acier

Perno regulável. Aço



Código
code/código

Modelo



86-222/2

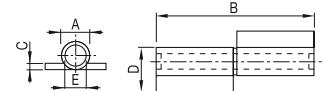
Pernio regulable

6

Pernio pala. Acero

Charnière à pelle. Acier

Perno com aba. Aço



Código
code/código

øA
(mm)

B
(mm)

øC
(mm)

D
(mm)



Ala corta/aile courte/asa curta

86-222/6	12	80	2,0	15	10
86-222/8	14	80	3,0	20	10

Ala media/aile moyenne/mid asa

86-222/9	12	60	2,5	30	10
86-223/0	12	80	2,5	30	10
86-223/2	14	80	3,0	30	10
86-223/4	16	100	3,0	30	10
86-223/6	18	110	3,5	30	10
86-223/8	20	120	4,0	30	10
86-223/84*	25	140	5,0	37	10
86-223/86*	30	150	6,0	40	10

* Zincados/zingée/zincado