

LSFE-GTH, BSFE-GTH series

Welded steel heavy-duty castors with polyurethane spring, wheel with Blickle Extrathane® polyurethane tread

800–1,800 kg

Bracket: LSFE/BSFE series

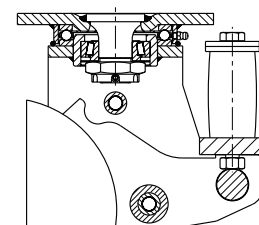
- particularly robust welded steel construction, zinc-plated, yellow-passivated, Cr6-free
 - elastomer spring for excellent damping properties
 - maintenance-free spring mechanism
- swivel bracket:
- axial grooved ball bearing ISO 104 and tapered roller bearing ISO 355 in the swivel head
 - bolted and secured welded central kingpin, extremely strong
 - dust and splash-proof
 - grease nipple

Wheel: GTH series

- tread: high-quality polyurethane elastomer Blickle Extrathane®, hardness 92 Shore A, colour light brown, non-marking, non-staining
- wheel centre: rugged grey cast iron, with grease nipple, lacquered, colour silver

Additional details:

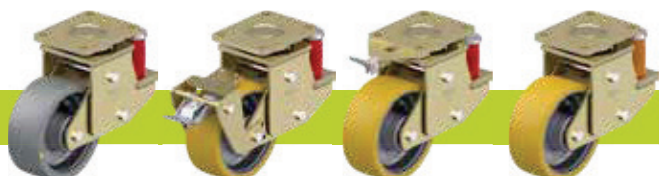
- bracket series: page 95
- wheel series: page 66
- bearing types: page 84–85



Swivel castors	Fixed castors	Wheel Ø [mm]	Wheel width [mm]	Load capacity [kg]	Spring force [kg]	Pretensioning force [kg]	Spring travel [mm]	Total height [mm]	Plate size [mm]	Bolt hole spacing [mm]	Bolt hole Ø [mm]	Offset swivel castor [mm]
LSFE-GTH 160K	BSFE-GTH 160K	160	50	800	500	50	25	245	140 x 110	105 x 75–80	11	100
LSFE-GTH 200K	BSFE-GTH 200K	200	50	1,000	500	50	25	265	140 x 110	105 x 75–80	11	100
LSFE-GTH 202K	BSFE-GTH 202K	200	80	1,600	850	150	25	275	175 x 140	140 x 105	14	100
LSFE-GTH 250K	BSFE-GTH 250K	250	60	1,500	850	150	25	315	175 x 140	140 x 105	14	120
LSFE-GTH 252K	BSFE-GTH 252K	250	80	1,800	1,200	200	25	315	200 x 160	160 x 120	14	120

11

Versions / options



	antistatic version, non-marking grey	with "Radstop" wheel brake	with directional lock	different spring tension
Technical description page	50	113	115	
Product code suffix	-AS	-RA		
Available for	upon request	upon request	upon request	upon request