

LSD-GB, BSD-GB series

Welded steel heavy-duty twin wheel castors, heavy-duty swivel head, wheels with Blickle Besthane® polyurethane tread

810–12,000 kg

Bracket: LSD/BSD series

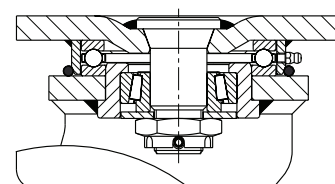
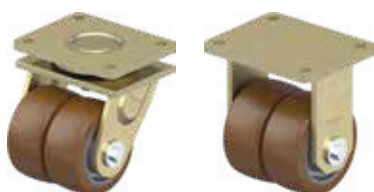
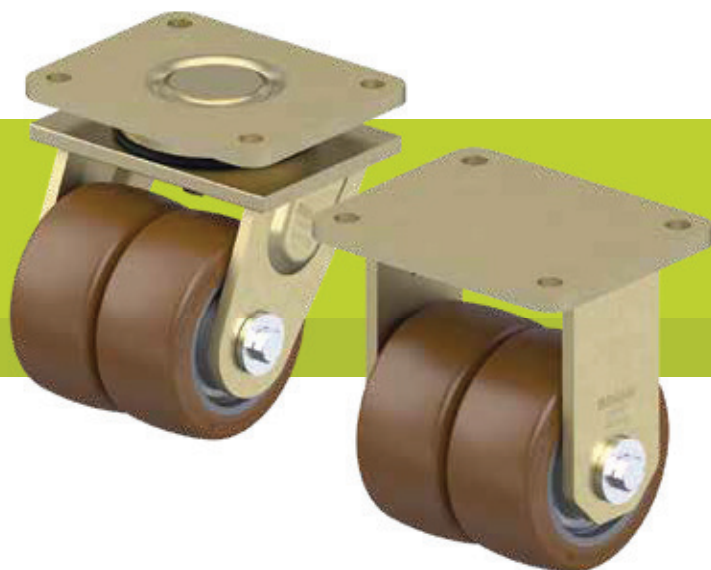
- particularly robust welded steel construction, zinc-plated, yellow-passivated, Cr6-free
- Swivel bracket:
 - axial grooved ball bearing ISO 104 and tapered roller bearing ISO 355 in the swivel head
 - bolted and secured welded central kingpin, extremely strong
 - dust and splash-proof
 - grease nipple

Wheel: GB series

- tread: high-quality polyurethane elastomer Blickle Besthane®, hardness 92 Shore A, colour brown, non-marking, non-staining
- wheel centre: rugged grey cast iron, with grease nipple from wheel Ø 150 mm, lacquered, colour silver

Additional details:

- bracket series: page 94
- brakes: page 112–113
- wheel series: page 312–313
- bearing types: page 84–85



5

Swivel castors	Fixed castors	Wheel Ø [mm]	Wheel width [mm]	Load capacity [kg]	Bearing type	Total height [mm]	Plate size [mm]	Bolt hole spacing [mm]	Bolt hole Ø [mm]	Offset swivel castor [mm]
LSD-GB 100K	BSD-GB 100K	100	2 x 40	810	ball bearing	145	140 x 110	105 x 75–80	11	45
LSD-GB 128K	BSD-GB 128K	125	2 x 60	1,500	ball bearing	185	175 x 140	140 x 105	14	50
LSD-GB 150K-35	BSD-GB 150K-35	150	2 x 50	1,400	ball bearing	215	175 x 140	140 x 105	14	55
LSD-GB 200K-35	BSD-GB 200K-35	200	2 x 50	1,800	ball bearing	260	175 x 140	140 x 105	14	60
LSD-GB 202K	BSD-GB 202K	200	2 x 80	2,850	ball bearing	280	255 x 200	210 x 160	18	60
LSD-GB 250K	BSD-GB 250K	250	2 x 60	2,700	ball bearing	330	255 x 200	210 x 160	18	70
LSD-GB 252K	BSD-GB 252K	250	2 x 80	3,700	ball bearing	330	255 x 200	210 x 160	18	70
LSD-GB 302K	BSD-GB 302K	300	2 x 80	4,300	ball bearing	390	255 x 200	210 x 160	18	80
LSD-GB 304K		300	2 x 100	5,400	ball bearing	390	255 x 200	210 x 160	18	80
	BSD-GB 304K	300	2 x 100	5,400	ball bearing	390	300 x 200	210 x 160	18	–
LSD-GB 404K-42	BSD-GB 404K-42	400	2 x 100	6,800	ball bearing	530	400 x 300	340 x 240	26	125
LSD-GB 504K	BSD-GB 504K	500	2 x 150	12,000	ball bearing	630	400 x 300	340 x 240	26	125

Fixed castors: long side of plate parallel to the wheel axle

Versions / options



	hydrolysis resistant, with cast nylon wheel centre	electrically conductive version, non-marking	with "Radstop" wheel brake	with "Radstop" wheel brake	with directional lock 4 x 90°	with directional lock 4 x 90° (inserted by hand)	with steel foot guard
Technical description page	56	50	113	113	115	115	116
Product code suffix	GSP0B series	-ELS	-RA	-RAH	-RI4	-RI4H	-FS
Available for	upon request	up to wheel Ø 300 mm upon request	up to wheel Ø 200x50 mm upon request	from wheel Ø 200x80 mm upon request	wheel Ø 100–200x50 mm upon request	from wheel Ø 200x80 mm upon request	upon request