

LSFN-GST, BSFN-GST series

Welded steel heavy-duty castors with steel spring, wheel with Blickle Softhane® polyurethane tread

600–1,800 kg

Bracket: LSFN/BSFN series

- particularly robust welded steel construction, zinc-plated, yellow-passivated, Cr6-free
- robust spring structure with steel spring
- maintenance-free spring mechanism

Swivel bracket:

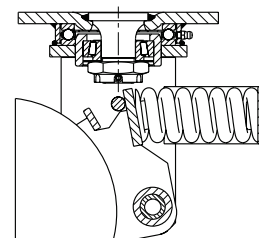
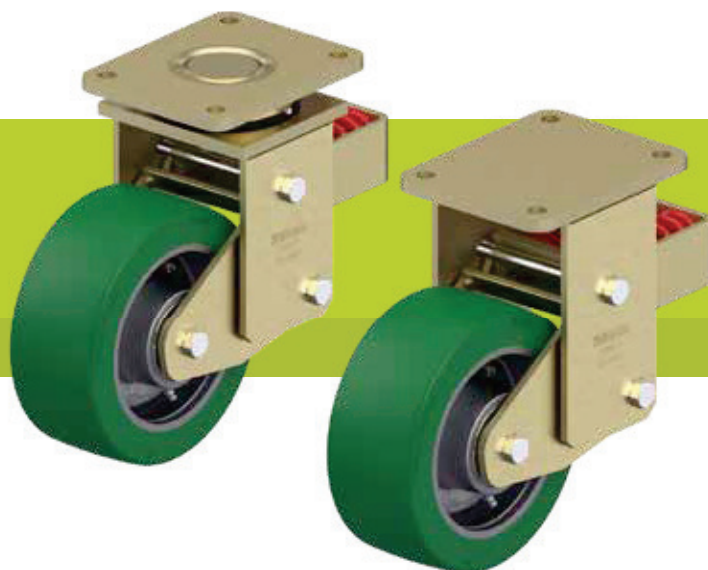
- axial grooved ball bearing ISO 104 and tapered roller bearing ISO 355 in the swivel head
- bolted and secured welded central kingpin, extremely strong
- dust and splash-proof
- grease nipple

Wheel: GST series

- tread: high-quality polyurethane elastomer Blickle Softhane®, hardness 75 Shore A, colour green, non-marking, non-staining
- wheel centre: rugged grey cast iron, with grease nipple, lacquered, colour silver

Additional details:

- bracket series: page 95
- wheel series: page 67
- bearing types: page 84–85



Swivel castors	Fixed castors	Wheel Ø [mm]	Wheel width [mm]	Load capacity [kg]	Spring force [kg]	Pretensioning force [kg]	Spring travel [mm]	Total height [mm]	Plate size [mm]	Bolt hole spacing [mm]	Bolt hole Ø [mm]	Offset swivel castor [mm]
LSFN-GST 160K	BSFN-GST 160K	160	50	600	570	75	25	245	140 x 110	105 x 75–80	11	100
LSFN-GST 200K	BSFN-GST 200K	200	50	800	570	75	25	265	140 x 110	105 x 75–80	11	100
LSFN-GST 202K	BSFN-GST 202K	200	80	1,200	750	100	25	275	175 x 140	140 x 105	14	100
LSFN-GST 250K	BSFN-GST 250K	250	60	1,200	750	100	25	315	175 x 140	140 x 105	14	120
LSFN-GST 252K	BSFN-GST 252K	250	80	1,400	1,000	150	45	370	200 x 160	160 x 120	14	120
LSFN-GST 302K	BSFN-GST 302K	300	80	1,800	1,000	150	45	395	200 x 160	160 x 120	14	120

Versions / options



	antistatic version, non-marking grey	with "Radstop" wheel brake	with directional lock
Technical description page	50	113	115
Product code suffix	-AS	-RA	
Available for	upon request	upon request	upon request